

FARAMAG™ FM750

ElectroMagnetic Flow Meters

Superior fluid measurement for an array of applications



MAG FLOW METER



±0.5% ACCURACY



0.5" - 120" / DN15 - DN3000 DIAMETERS



COMPACT & REMOTE DISPLAY OPTIONS



87 - 580 psi / 6 - 40 Bar



EASY & INTUITIVE INSTALLATION

FaraMag™ Mag Meter Solutions

H2flow Controls has over 20 years of specialist competence integrating flow management solutions to a variety of different industries and applications. Built to exacting standards, the FaraMag™ FM750 represents precision in it's finest form.



FaraMag™ FM750
Compact Type Electromagnetic Flowmeter

The FM750 is available in a variety of configurations. The compact-type allows for local access to readings on it's user-friendly backlit LCD display. A variety of liner options, electrode materials and communication options are available in a wide range of sizes.



FaraMag™ FM750
Remote Type Electromagnetic Flowmeter

The remote-type FM750 is the ideal solution for meters positioned in difficult-to-access installations. The standard cable length allows the product's large, user-friendly backlit LCD display to be placed up to 32ft (10M) away from the sensor body.

Technical Data

Nominal Diameters:
0.5" - 120" (DN15 - DN3000)

Accuracy:
±0.5% of displayed value

Flange Types:
ANSI; DIN

Technical Data

Nominal Diameters:
0.5" - 120" (DN15 - DN3000)

Accuracy:
±0.5% of displayed value

Flange Types:
ANSI; DIN

Benefits

- Unaffected by changes in fluid density, viscosity, temperature, pressure and conductivity
- No parts to impede the flow
- Easy-to-read, sensor-mounted backlit LCD display
- Available remote controller for easy programming

Benefits

- Unaffected by changes in fluid density, viscosity, temperature, pressure and conductivity
- No parts to impede the flow
- Convenient, backlit LCD remote display
- Available remote controller for easy programming

Scan to learn
more about
the FaraMag™
flow meter





FaraMag™ FM750

Sanitary Type Electromagnetic Flowmeter

Both compact- and remote-type standard FM750 Carbon Steel sensor bodies can be upgraded to either 304 or 316 Stainless Steel. This is ideal for many food & beverage and pharmaceutical applications. Sanitary-type are available with ANSI, DIN and tri-clamp flanges.

Technical Data

- Nominal Diameters:**
0.5" - 120" (DN15 - DN3000)
- Accuracy:**
±0.5% of displayed value
- Flange Types:**
ANSI; DIN, Tri-clamp

Benefits

- Unaffected by changes in fluid density, viscosity, temperature, pressure and conductivity
- Effectively prevents the accumulation of measured fluid residues
- Available with either compact or remote display
- Easy to clean and maintain, making it ideal for food & beverage, manufacturing and pharmaceutical applications

FaraMag™ FM750

Insertion Type Electromagnetic Flowmeter

The FM750 insertion-type mag meter utilizes the NIKURADSE principle, allowing for simplified installation and reduced costs. The meter is ideal for cast iron and cement pipe, and offers many of the same features as other FM750 models. Units are available for 8" - 120" (DN200-DN3000) pipe.

Technical Data

- Nominal Diameters:**
8" - 120" (DN200 - DN3000)
- Accuracy:**
±1.5% of displayed value
- Flow Meter Body:**
Stainless Steel

Benefits

- Simple installation and cost efficient
- Ideal for liquids having a conductivity of $\geq 20\mu\text{S}/\text{cm}$
- Available with either compact or remote display
- 4-20mA output, Pulse output, RS485, HART, MODBUS

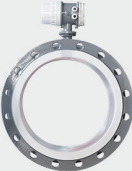




KNOW THE FLOW™

FaraMag™ FM750 mag meters from H2flow Controls use Faraday’s electromagnetic principle to measure the flow of conductive liquids and slurry in a closed pipe. The fact that there are no moving parts in contact with the liquid means that the flow meter isn’t affected by any solid particles that may pass through the pipe, making this technology ideal for a wide array of industries and applications.

KEY FEATURES & BENEFITS

- No moving parts to impede the flow
- Bi-directional flow metering
- Compact and remote versions available
- Intuitive controls and available remote control for simplified programming
- LCD backlit display
- Long operating life
- IP65, IP67 and IP68 protection classes available
- Select from a multitude of available units of measurement
- Available for 0.5-inch to 120-inch (DN15 to DN3000) pipe diameters
- Pressure rated for 87 to 580psi (6 to 40 Bar)
- Available with ANSI or DIN flanges
- Accuracy: $\pm 0.5\%$ of the displayed value
- 8 programming languages: English, French, Portuguese, Turkish, Russian, Korean, Simplified Chinese, Traditional Chinese
- Self-diagnosis and auto detection feature
- Displays instantaneous flow, flow unit, or cumulative flow
- 120-230VAC, 12-24VDC, 3.6V power supply options

ADDITIONAL UNIQUE FEATURES OF FARAMAG™

				
<p>SIZING</p>	<p>PROGRAMMABLE</p>	<p>APPLICATION</p>	<p>DISPLAY</p>	<p>COMMUNICATION</p>
<p>Available for a wide range pipe diameters</p>	<p>Programmable active analog output</p>	<p>Measurement of a wide variety of liquids</p>	<p>Available Compact or Remote backlit displays</p>	<p>Various communication options, including RS232, RS485 and HART</p>

FaraMag™ FM750 mag meters are available in several configurations, including: integrated/compact type, split/remote type, sanitary/316SS type, and insertion type.



WHERE PRECISION MEETS RELIABILITY

Accuracy

FaraMag™ mag meters are ideal for many critical applications because of their incredible accuracy and reliability. Across the entire model range FaraMag™ FM750 flow meters boast an impressive 99.5% average accuracy.

Refer to the table to the right for average accuracy at specific flow rates.

Reliability

Like all H2flow Controls products, FaraMag™ mag meters offer an uncompromising commitment to quality and reliability. Features of the FM750 include a choice of 316 Stainless Steel or optional Hastelloy Measuring electrodes; a carbon steel or optional 316 Stainless Steel sensor body; a wide range of lining options such as hard rubber, PTFE, and neoprene; and a plethora of communication options including HART, RS232, and RS485.

DIAMETER Inches (DN)	RANGE GPM / m/s	ACCURACY
0.5 - 0.75" (DN15 - DN20)	< 4,755 GPM; (< 0.3 m/s)	±0.25% FS
	4,755 - 15,850 GPM; (0.3 - 1 m/s)	±1.0% R
	15,850 - 237,754 GPM; (1 - 15 m/s)	±0.5% R
1" - 24" (DN25 - DN600)	< 4,755 GPM; (< 0.3 m/s)	±0.25% FS
	4,755 - 15,850 GPM; (0.3 - 1 m/s)	±0.5% R
	15,850 - 237,754 GPM; (1 - 15 m/s)	±0.3% R
28" - 120" (DN700 - DN3000)	< 4,755 GPM; (< 0.3 m/s)	±0.25% FS
	4,755 - 15,850 GPM; (0.3 - 1 m/s)	±1.0% R
	15,850 - 237,754 GPM; (1 - 15 m/s)	±0.5% R

% FS: Relative Range

% R: Relative Measurement

Engineered for your application

FaraMag™ FM750 mag meters from H2flow Controls are available for pipe diameters as small as 0.5-inch (DN15) and as large as 120-inch (DN3000). The line is suitable for a wide array of applications.

H2flow Controls has a rich history of providing quality products to a multitude of fluid-handling markets. The FaraMag™ FM750 mag meter continues this tradition, by combining unparalleled quality and staggering accuracy with essential features and options.

Whether your operation is in Water & Wastewater, Oil & Gas, Agriculture, Groundwater, Pharmaceutical, Food & Beverage, or elsewhere - the FM750 provides accurate, reliable flow monitoring of liquids $\geq 5\mu\text{S}/\text{cm}$ at a fraction of the cost of many competing technologies.

With FaraMag™ you'll have a flow meter that is ideal for:



Water & Wastewater



Irrigation & Agriculture



Chemical & Petrochemical



Food & Beverage



Mining & Aggregate



RO & Ultra Pure Water

TECHNICAL SPECIFICATIONS

Diameter Range	0.5-inch to 120-inch (DN15 to DN3000)
Pressure Rating	87 - 580 psi (6 - 40 Bar)
Flange Types	ANSI, DIN, Tri-clamp (optional for 304SS and 316SS only)
Body Material	Carbon Steel, 304 Stainless Steel (optional), 316 Stainless Steel (optional)
Inner Liner	Hard Rubber (PTFE optional)
Measuring Electrodes	316 Stainless Steel, Hastelloy (optional), Titanium (optional), Tantalum (optional), Platinum-iridium alloy (optional), Stainless Steel covered with Tungsten Carbide (optional)
Accuracy	±0.25% of the measured value (Relative Range) ±1.0% of the measured value (Relative Measurement)
Medium Temperature	-4 - 158°F (-20 - 70°C); Integrated Type -4 - 140°F (-20 - 60°C); Remote Type, Neoprene & Polyurethane Liner -40 - 356°F (-40 - 180°C); Remote Type, PTFE Liner / PFA Liner, F46 Liner
Ambient Temperature	-13 - 140°F (-25 - 60°C)
Class of Protection	IP67: sensor (IP68 optional) IP65: convertor (IP67 optional)
Standards	Product Standard: JB/T 9248-1999 Electromagnetic Flowmeter Calibration Standard: JJG 1033-2007 Ex-proof Mark: Exd [ia]IICt5, Exmd IICT4
Communication Options	Modbus RS232 protocol, Modbus RS485 protocol, HART communication protocol, Profibus DP communication protocol, GPRS Wireless Communication



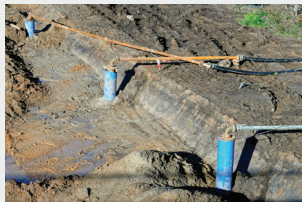
Oil & Gas



Process Manufacturing



Pharmaceutical



Ground Water & Reclamation



Cooling Towers



Wineries & Beer Breweries

Progress through Innovation[™]

Our innovative solutions are developed with a focus on controlling, protecting and monitoring machines and processes that are driven by electric motors.

Contact your authorized H2flow Controls solutions provider to find out how our products can reduce your operating costs and increase your productivity.

Find an authorized partner at www.h2flow.net/locate-a-partner

H2flow Controls, Inc.

3545 Silica Road, Unit F
Sylvania, OH 43560
USA

Tel: (+1) 888.635.0296
Fax: (+1) 419.517.9900

sales@h2flow.net
www.h2flow.net

©2021 H2flow Controls, Inc. All rights reserved.

H2flow reserves the right to make changes to specifications and product features without notice. Please contact H2flow or visit www.h2flow.net for the most up-to-date versions of our product literature.

FaraMag FM750 brochure Rev.1.0

